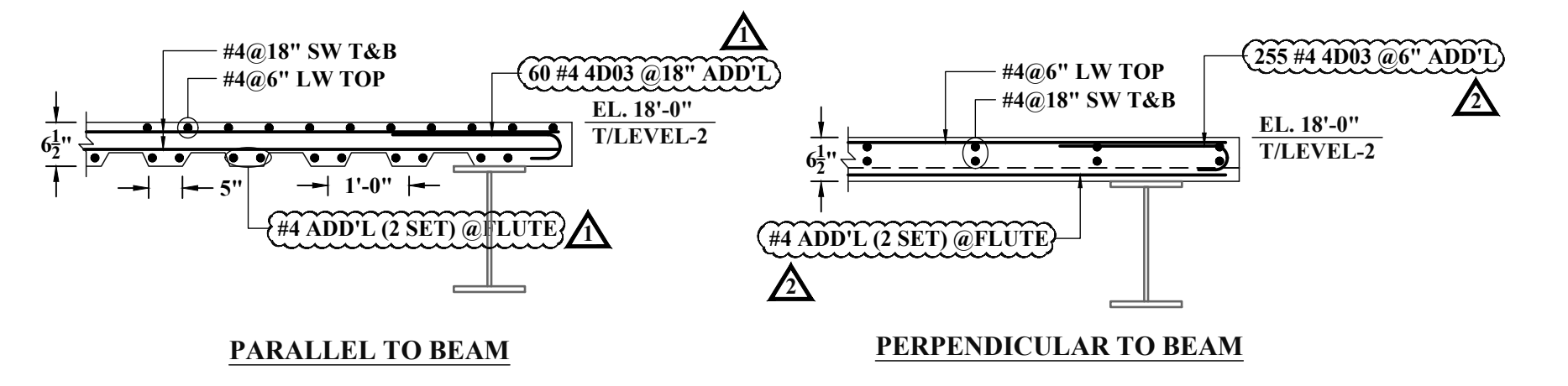


**SECTION 1**  
SCALE: 1/2"=1'-0"  
REF: 12/SS-1

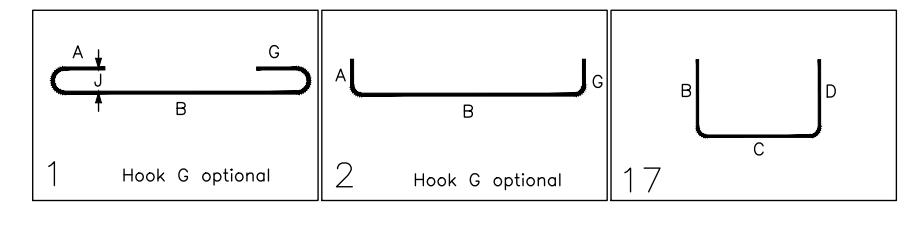
**SECTION 2**  
SCALE: 1/2"=1'-0"  
REF: 16/S7-3



**SECTION 3**  
SCALE: 1/2"=1'-0"  
REF: 30/SS-1

Release Number: SD-12-1

BENDING DETAILS																
Bar Mark	Qty	Size	Total Length	Type	X'	Y'	Z'	W'	V'	U'	T'	S'	R'	Q'	P'	
4D03	315	#4	2'-7"	1	0'-6"	2'-1"										
4D02	405	#4	4'-7"	2	0'-8"	3'-11"										
4D01	20	#4	6'-6"	17	2'-9"	3'-9"										



**ABBREVIATIONS**

TOP	-
BOTTOM	BOT
TOP&BOTTOM	T&B
CONTINUOUS	CONT
FACE BAR	-
CORNER BAR	COR
VERTICAL	VERT
HORIZONTAL	HOR
STIRRUPS	STIRR
EACH WAY	EW
EACH FACE	EF
INNER FACE	IF
OUTER FACE	OF
EACH SIDE	ES
MASONRY	M
DOWEL	DWL
DOWEL/VERTICAL	D/V
TRANSVERSE	TRANS
LONG WAY BAR	LW
SHORT WAY BAR	SW

**(SLAB ON METAL DECK)**  
**LAP SCHEDULE (CLASS-B)**  
REF: 30/S3-1

SIZE	4000 PSI	
	TOP	OTHER
#3	24"	19"
#4	33"	25"
#5	41"	31"
#6	49"	37"
#7	71"	54"
#8	81"	62"
#9	91"	70"

- NOTES:-**
- TYPICAL CLEARANCES  
A). TOP - 3/4"  
B). BOTTOM - 1/2"  
C). SIDES - 2"
  - A/E PLEASE VERIFY THE ALL CLOUDED ITEMS
  - PROVIDE FIELD CUT AS REQUIRED LOCATIONS
  - BAR TO BE PLACED AT EQUAL SPACING U.O.N.
  - TILT HOOK TO ACCOMMODATE THE COVER, IF NEEDED

**SLAB ON METAL DECK REINFORCEMENT DETAILS : LEVEL-2**  
SCALE: 1/12"=1'-0"  
REF: 1/S2-2 & 1/A1-2A

**ALL BARS IN THIS DRAWING ASTM A615 GRADE 60 BLACK UNCOATED**

NOTE: REINFORCING STEEL PLACING DRAWINGS TO BE USED ONLY IN CONJUNCTION WITH CONTRACT DRAWINGS AND SPECIFICATIONS. ELEVATIONS & DIMENSIONS SHOWN ON THIS DRAWING ARE FOR VERIFICATION BY THE EOR OR FOR DETAILING PURPOSES ONLY AND SHOULD NOT BE USED FOR CONSTRUCTION UNLESS VERIFIED BY THE ARCHITECT, ENGINEER OF RECORD, OR CONTRACTOR.